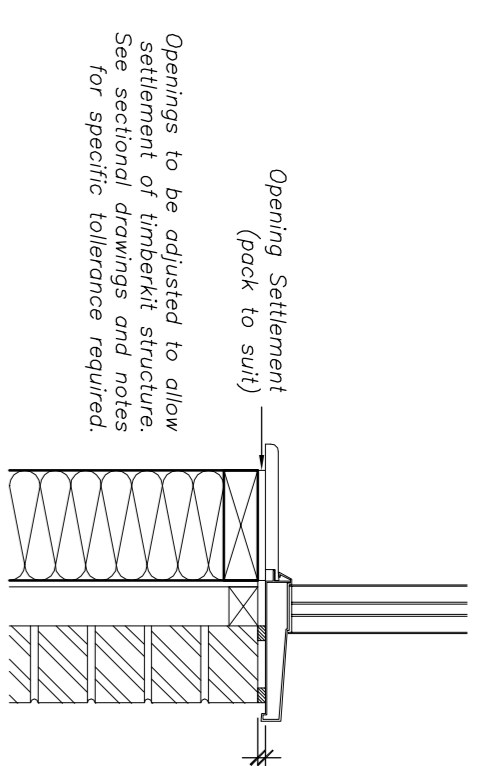
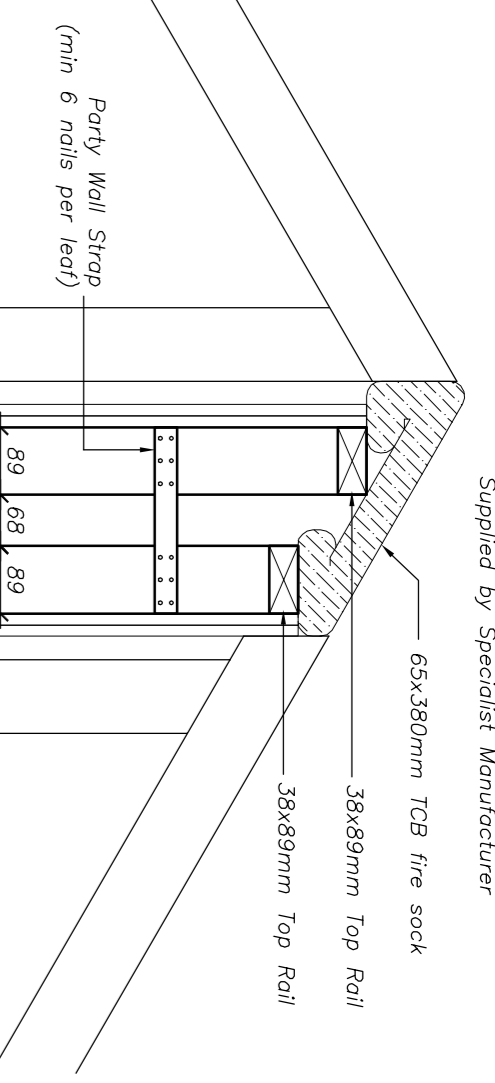


Please note that the vertical alignment is not an actual section through the building. It is a simplified representation of the vertical alignment and information as possible in one drawing (i.e. panel heights in all cases, material build-up dimensions and standard details etc.).

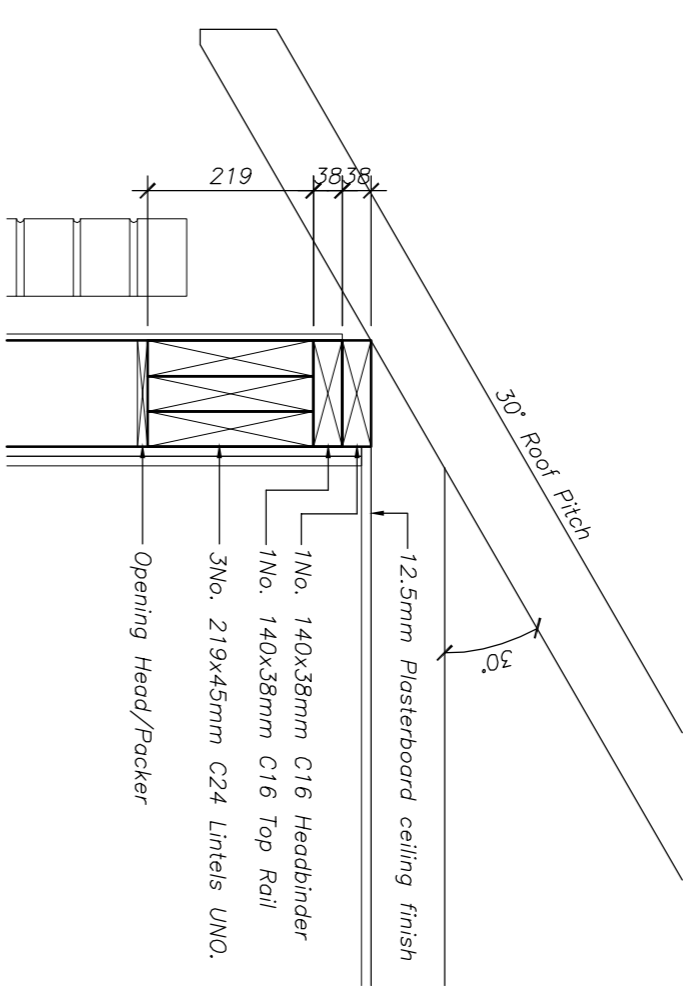


Typical Settlement Detail at External Openings
Scale 1:10

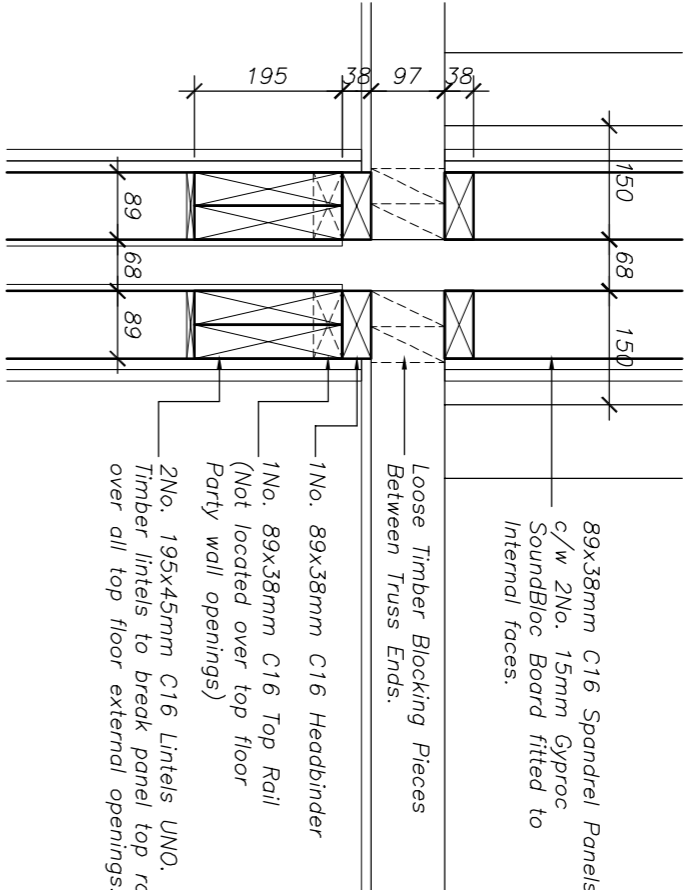
Differential Movement:
As in all timber frame structures with it is essential to allow adequate tolerances within the external leaf to allow the timber kit to settle. The external leaf of the timber kit should be allowed to settle. The following settlement is anticipated:
At Cill Level on: GF 4.5mm
1F 10.5mm
ZF 16.5mm
At Soffit Level: 20mm



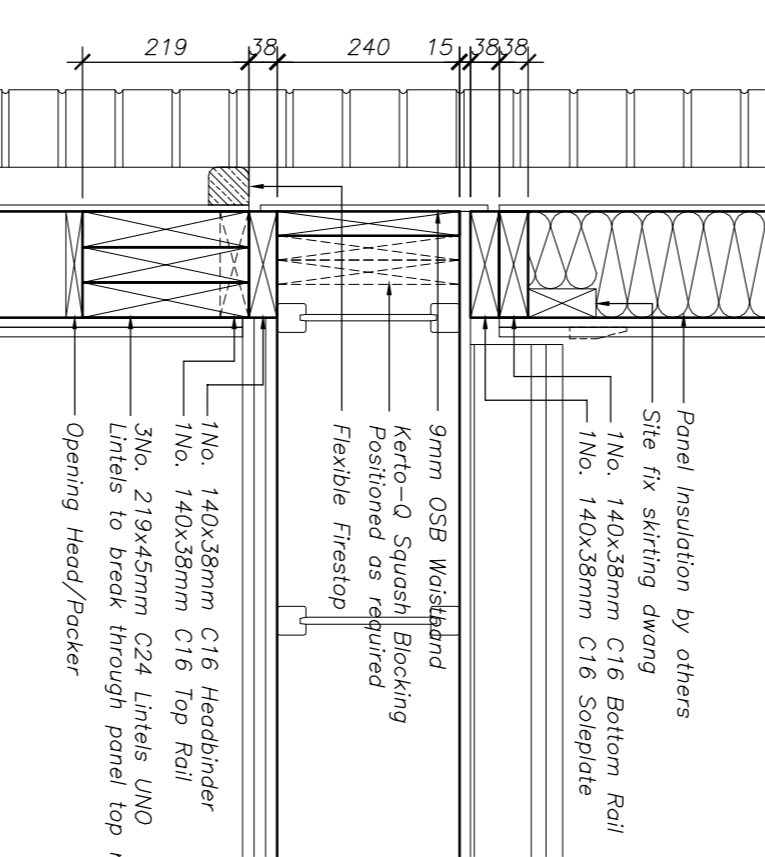
Roof Trusses to be Designed & Supplied by Specialist Manufacturer
Scale 1:10



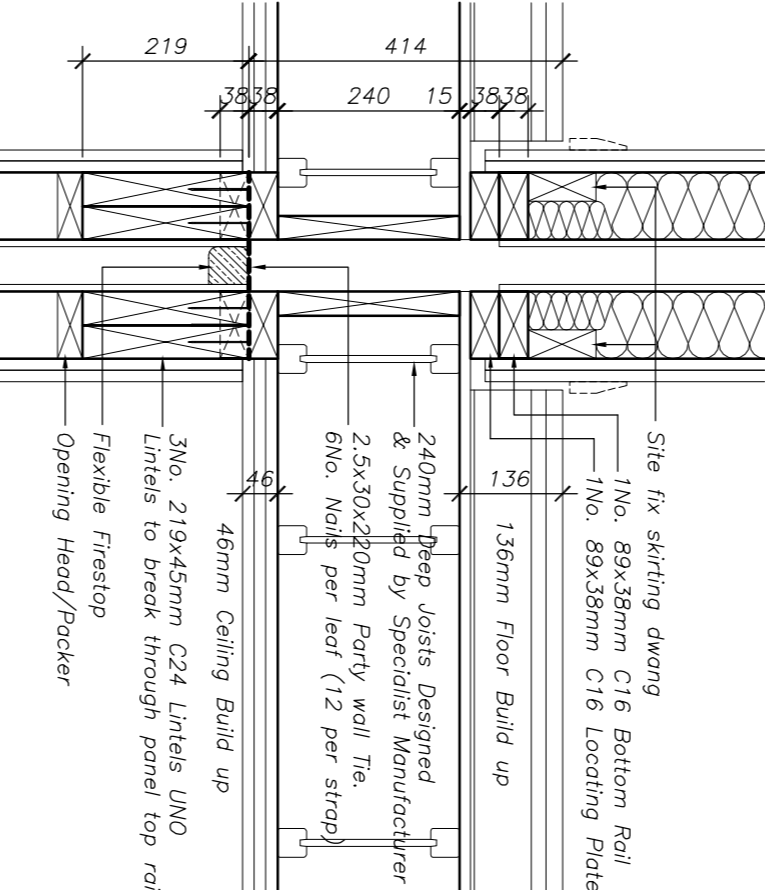
Detail 2
Scale 1:10



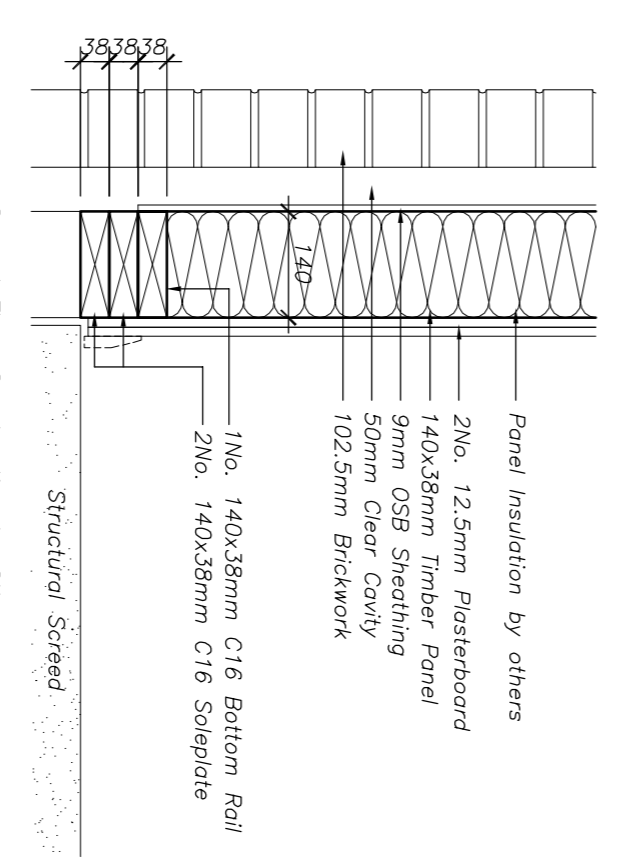
Detail 3
Scale 1:10



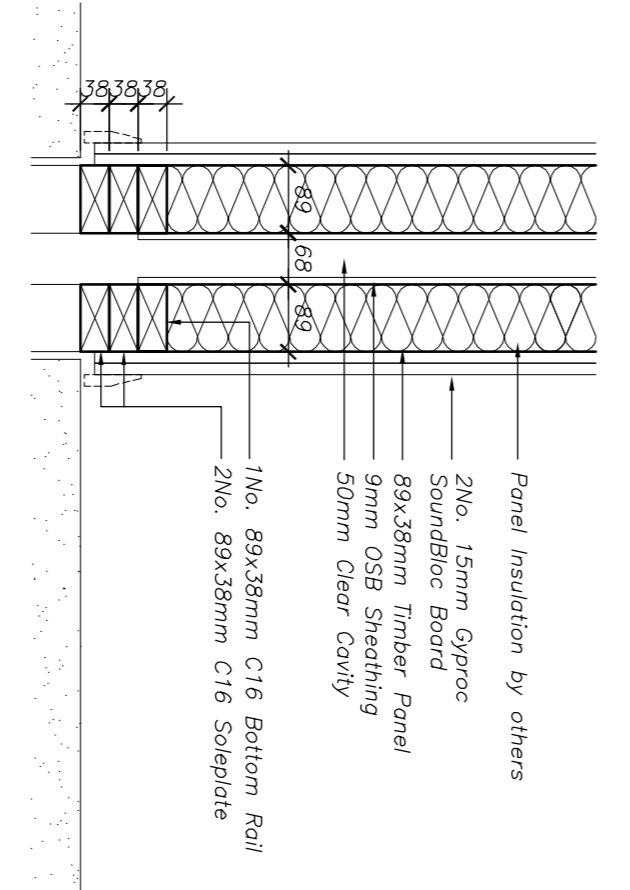
Detail 4
Scale 1:10



Detail 5
Scale 1:10



Detail 6
Scale 1:10



Detail 7
Scale 1:10

- General Notes:**
- All dimensions are in millimetres unless noted otherwise.
 - Dimensions shall not be scaled from this drawing. Any dimensions not shown should be checked on site or verified by the Engineer.
 - Dimensions shown are from hard timber to timber faces unless noted otherwise.
 - No variation to this drawing shall be permitted unless authorised in writing by the Engineer.
 - This drawing shall be read in conjunction with all relevant Engineer's drawings (latest revisions).
 - This drawing shall be read in conjunction with all relevant Architect's drawings (latest revisions).

Timber Kit Notes:

This timberkit drawing provides details of timberkit only. All other structural items including roof trusses, masonry support & foundations are to be detailed by others. All wallplate & vertical alignment drawings should be approved by the project Architect prior to the commencement of any fabrication.

REV.	DESCRIPTION	DRAWN BY	DATE

Client: dbm consultants

Project: Timber Kit General Arrangement.

Scale: As Noted

Status: Preliminary

Drawing No.: Preliminary

Vertical Alignment
Scale 1:20