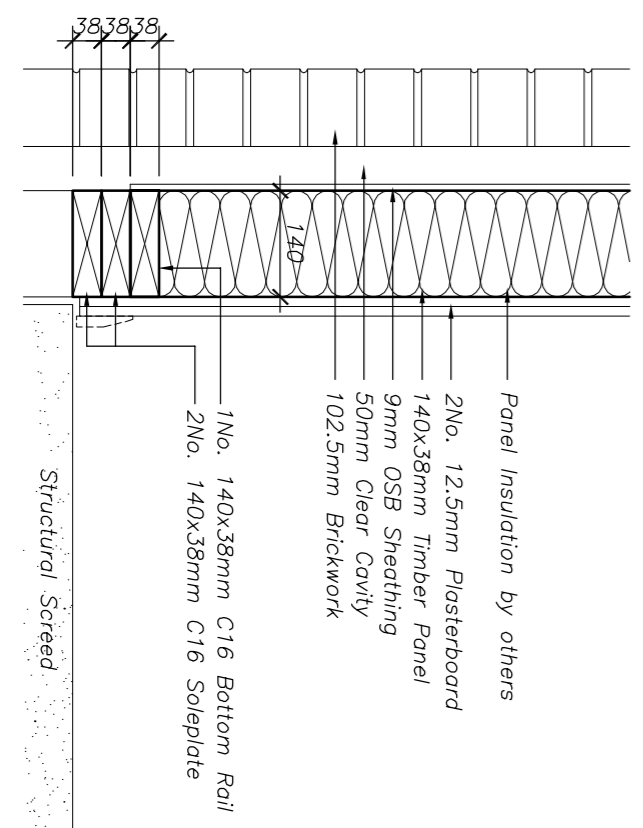
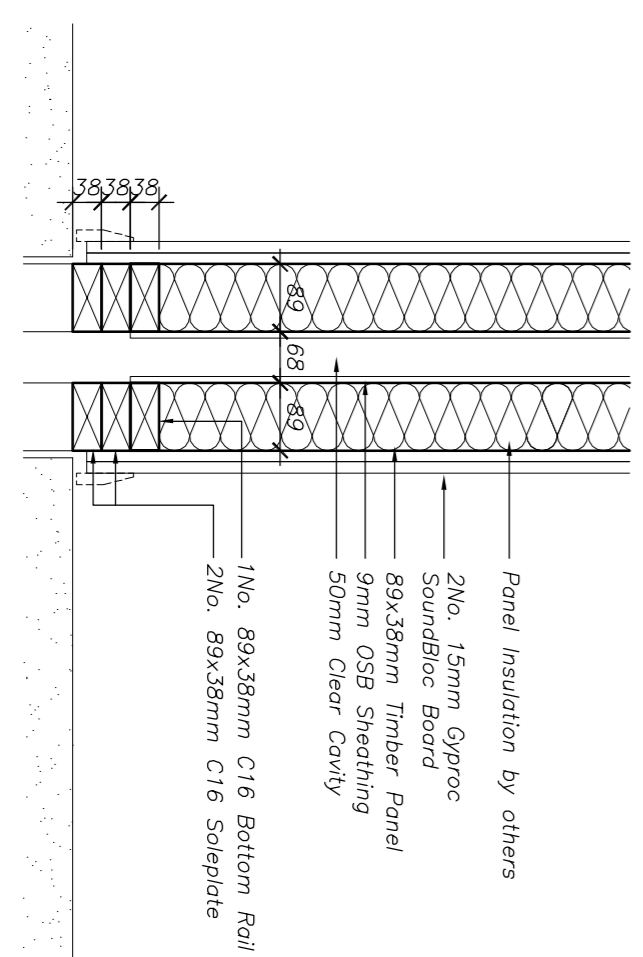


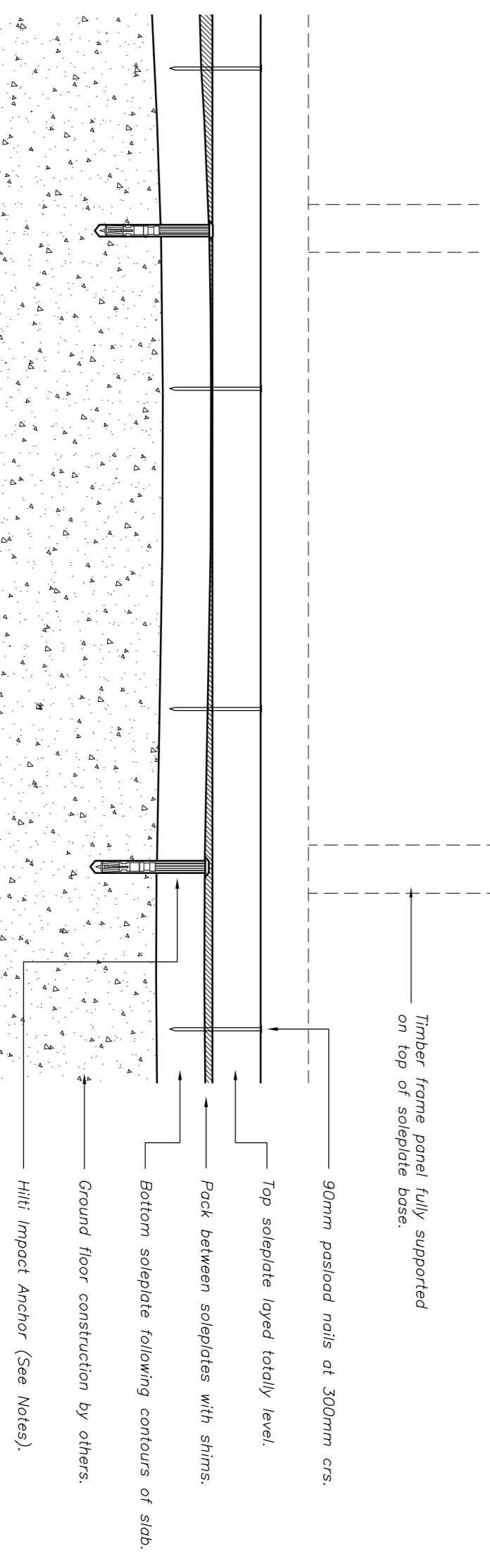
Soleplate Layout
Scale 1:50



Detail 1
Typical External (EX) Soleplate
Scale 1:10



Detail 2
Typical Internal (PY) Soleplate
Scale 1:10



Detail 3
Typical Soleplate Fixing Detail
Scale 1:5

- General Notes:**
- All dimensions are in millimetres unless noted otherwise.
 - Dimensions shall not be scaled from this drawing. Any dimensions not shown should be checked on site or verified by the Engineer.
 - Dimensions shown are from hard timber to timber faces unless noted otherwise.
 - No variation to this drawing shall be permitted unless authorised in writing by the Engineer.
 - This drawing shall be read in conjunction with all relevant Engineer's drawings (latest revisions).
 - This drawing shall be read in conjunction with all relevant Architect's drawings (latest revisions).

Timber Kit Notes:

General

This timberkit drawing provides details of timberkit only. All other components of the timberkit shall be in accordance with support & foundations one to be detailed by others.

All uprights & vertical alignment drawings should be approved by the project Architect prior to the commencement of any fabrication.

Soleplate Specifications:

External: HiFi Impact Anchor, HFS-1 8/80x110 @ 300mm c/s UNO.
Internal: HiFi Impact Anchor, HFS-1 8/80x110 @ 900mm c/s UNO.

Legend:

- Detaches 140x38mm C16 loadbearing timber panel.
- Detaches 89x38mm C16 loadbearing timber panel.

REV.	DESCRIPTION	DRAWN BY	DATE

CLIENT	PROJECT	DRAWING TITLE
		Soleplate Layout & Fixing Details.
		SCALE: As Noted
		STATUS: Preliminary
		DRAWING No.:

<p>dbm consultants Consulting Civil and Structural Engineers</p> <p>61/63, Kears Road, Motherwell, ML1 2PW Tel: (01699)267828 Fax: (01699)275191 Email: dbm@dbmconsultants.co.uk www.dbmconsultants.co.uk</p>	
--	--